



Kao Corporation, S.A

Member of Kao Chemicals Europe

Puig dels Tudons, 10 -E-08210 Barberà del Vallès

Phone : +34 93 739 93 00

E--mail : marketing@kao.es

Fax : +34 93 739 93 77

Web : www.kaochemicals-eu.com



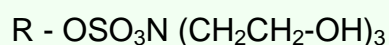
APROVADO

Dep. Qualidade

EMAL[®] 40TE

- Primary anionic surfactant
- Vegetable origin
- Foaming detergent

CHEMICAL IDENTIFICATION



R= C₁₂₋₁₄natural

INCI Name : TEA Lauryl Sulfate

CAS Number : 139-96-8

TECHNICAL SPECIFICATION

		Kao Method
APPEARANCE (20°C) :	Yellowish Transparent Liquid	KCSA-258
ODOUR :	Characteristic	KCSA-267
COLOUR (Apha) :	100 max.	KCSA-088
pH (solution in water 10%) :	7.0 – 7.5	KCSA-014
ACTIVE MATTER (% , Ew = 424) :	39 - 41	KCSA-130
UNSULPHATED MATTER (%) :	1.5 max.	KCSA-086
MICROBIOLOGICAL CONTROL (cfu / mL) :	10 max.	KCSA-234



EMAL[®] 40TE

TYPICAL PROPERTIES

DENSITY (20°C, g/mL, "spot") :	1.040 approx.
VISCOSITY (50°C cPs) :	< 100
WATER SOLUBILITY :	Soluble
MELTING POINT (°C) :	Between -10°C and 0°C
DROPPING POINT (°C) :	9°C approx.
PRESERVATIVE :	CIT/MIT
CHARACTER :	Anionic

APPLICATION PROPERTIES

- EMAL[®] 40TE is an anionic surfactant with a very good foaming power (dense foam), even at very diluted concentration, and with excellent detergency properties. It forms stable and cream foam, which produces a soft touch on the skin and hair.
- Solubility and performance of EMAL[®] 40TE are affected by water hardness, ionic strength and temperature. In general, sulphates are more susceptible to thermal and hydrolytic degradation problems, in comparison to sulphonates.
- EMAL[®] 40TE due to its good skin compatibility is used in personal care products as main surfactant or combined with SLES. It is recommended for dermatological liquid soaps and baby products.
- EMAL[®] 40TE can be mixed with other anionic, non-ionic or amphoteric surfactants. Due to its anionic character it shouldn't be mixed with cationic components (surfactants, dyes,...) in the same formula. A kind of incompatibilities could appear (separation, precipitate, viscosity changes,... etc.)

STORAGE – HANDLING – SHELF LIFE

- EMAL[®] 40TE is chemically stable for a long period of time under appropriate storage conditions (temperature of 25°C and original unopened container).
- The shelf life of EMAL[®] 40TE can be considered of 1 year minimum under proper storage conditions. After longer storage time some of its characteristic parameters (*odour, appearance, colour, pH...*) should be checked before using it.

The information and recommendations in this publication are to the best of our knowledge reliable. However, nothing herein is to be construed as a warranty or representation. Users should make their own tests to determine the applicability of such information or the suitability of any products for their own particular purpose. Statements concerning the use of the products described herein are not to be construed as recommending the infringement of any patent and no liability for infringement arising out of any such use is assumed.

